



Hot Helsinki Team

# Winter Helsinki 03-04

EVENTS AND  
EXHIBITIONS

# Helsinki's Winter is Heating Up!

This brochure presents a host of events and places to visit during your winter holiday in Helsinki. The diversity of this city never ceases to amaze, offering exciting events, high quality concerts and many interesting exhibitions.

This winter the Helsinki City Tourist & Convention Bureau introduces the Hot Helsinki Team. This team brings you the hottest, coolest, most exciting and highest quality events – everything there is to provide a warm atmosphere in the middle of winter. In addition to great entertainment, the events offer the chance to participate in the making of Finnish culture.

Tourist Information offers more information about Hot Helsinki happenings, products and services – everything that is trendy and hot in Helsinki right now. The Hot Helsinki Team is your local winter warmer!

Don't forget to ask also for the Helsinki Your Way brochure, which features in-depth information about travel services, such as hotels and guided tours in Helsinki. The brochure also lists the most important sights and a variety of other activities, such as skiing, skating and winter swimming places.

Additional information about Helsinki's offerings is available at the Tourist Information. During the winter season from October to May Tourist Information is open weekdays from 9am to 6pm and weekends from 10am to 4pm. Additional information is also available at the Hotel Booking at the Central Railway Station.

**We wish you a fun-filled winter holiday in Helsinki!**

Helsinki City Tourist & Convention Bureau


The Helsinki City Tourist & Convention Bureau cannot take responsibility for possible changes. Layout: Mikko Teerenhovi. Translation: Crockford Communications. Printed by: F. G. Lönnberg 2003. Publisher: Helsinki City Tourist & Convention Bureau. Pictures: Remo Bardazzi, Finnish National Gallery Central Art Archives, Gallen-Kallela Museum, Toivo Heiskanen, Anneli Hongisto, Voitto Niemelä, Nintendo Co. Ltd., Katrin Schoof, Juhani Seppovaara, Riku Virtanen, Paul Williams.


# Hot Helsinki Team

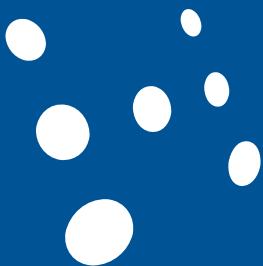
YOUR LOCAL WINTER WARMER



## Contents

4-29  EVENTS IN THE CITY

30-43  EXHIBITIONS



# Events in the city

## **20-23.11.2003 AVANTO FESTIVAL**

The largest annual media festival in the Nordic region, the mainly international programme presents the latest trends in experimental film and music as well as classic works seldom seen in Finland. This year's theme is the avant-garde and underground art.

Several venues, including the Museum of Contemporary Art, Kiasma, Mannerheiminaukio 2

Tickets: in advance or at the door from the venue

Prices: Kiasma 6/5 € movies, 10/8 € or 12/10 € live performances (included in museum entrance fee), festival pass 67 €

## **21-23.11.2003 ELMA 2003 RURAL EXHIBITION**

The countryside arrives in Helsinki, bringing with it live farm animals. The theme of this year's exhibition is Central Finland, on whose stand visitors can explore holiday opportunities, discover the region's unique nature, and enjoy handicrafts and local foods.

Helsinki Fair Centre, Messuaukio 1, 21.11: 9am-7pm, 22-23.11: 10am-6pm

Tickets: from the door or Lippupalvelu, tel. +358 (0)600-10-800 (1.30 €/min+local call charge)

Prices: adults 10 €, children (7-15), students and pensioners 6 €, family ticket 22 €

## **21-30.11.2003 RUSSIAN SEASONS THEATRE FESTIVAL**

The Alexander Theatre once again presents the best of Russian theatre. This year Kama Ginkas and Henrietta Janovskaya present their latest productions as well as two very unique performances: a breathtaking monologue performed by Constantine Raikin, and a shadow play that skilfully combines traditional and new animation techniques.

The Alexander Theatre, Bulevardi 23-27, STOA East Helsinki Cultural Centre, Turunlinnantie 1, performances 4pm or 7pm

Tickets: Lippupalvelu, tel. +358 (0)600-10-800 (1.30 €/min+local call charge) or Lippupiste, tel. +358 (0)600 900 900 (0.95 €/min+local call charge)

Prices: 25/15/10 €

## UNTIL 6.1.2004 WINTER CIRCUS

This year's Winter Circus celebrates the tenth anniversary of the Dance Theatre Hurjaruuth. The show includes the 'Pig's Adventure on the Star Map of Christmas', plus other great characters, fantastic circus tricks and music by the Milky Way Orchestra.

Dance Theatre Hurjaruuth, Cable Factory, Tallberginkatu 1,  
performance times vary

Tickets: Dance Theatre Hurjaruuth,  
tel. +358 (0)9 565 7250 (weekdays 9am-4pm)

Prices: 17/12 €





### **UNTIL 15.1.2004 FORCES OF LIGHT**

This annual winter event takes place throughout the city centre and sees light and fire used to create works of art and spectacles during the darkest time of the year. The main event this year, a parade with installations and performances, will take place on 30.11. The parade begins at Suomenlinna and ends at Hietalahti Market. From 28.11 to 14.12 the Nordic Institute for Contemporary Art (NIFCA) together with the Art School 'Maa' will present works using light as a theme at the Galleria August on Suomenlinna. The exhibition is open Mon-Fri 3pm-6.30pm and Sat-Sun 1.30pm-5pm (plus during the Suomenlinna Christmas event on 29-30.11 from 1pm-6.30pm).

City centre and Suomenlinna

## **21-30.11.2003 BALTIC CIRCLE THEATRE FESTIVAL**

Organised for the second time, this festival presents the most current theatre from across the Baltic region. Half the performances were premiered this autumn. The international programme includes Soviet treatments of the Baltic countries, political theatre from Sweden and provocative performance art from Norway.

Several venues, including the Alexander Theatre, Bulevardi 23-27 and the 'Lume' Media Centre, Hämeentie 135 C

Tickets: Lippupalvelu, tel. +358 (0)600-10-800  
(1.30 €/min+local call charge) or

'Q' Theatre, tel. +358 (0)9 4542 1333

Price: 20 €/per performance

## **22.11.2003 FAIRPORT CONVENTION IN CONCERT**

Formed in London back in 1967, this classic band has been influenced by American folk music in the '60s, including Bob Dylan, Joni Mitchell and the Jefferson Airplane.

House of Culture, Sturenkatu 4, 8pm

Tickets: Lippupalvelu, tel. +358 (0)600-10-800  
(1.30 €/min+local call charge)

Price: 33 €

## **22-23.11.2003 GAME WORLD 2003**

Organised for the fourth time, this event brings together Finland's leading game companies under the same roof. The event features game consoles, PC equipment, the latest games and mobile phones, plus stage shows, game and product demonstrations, tests and game competitions.

Cable Factory, Tallberginkatu 1, both days 10am-6pm

Tickets: Lippupiste, tel. +358 (0)600 900 900 (0.95 €/min+local call charge)  
and from the door

Prices in advance: 1 day 8 €, 2 day 12 €, from the door: 1 day 10 €, 2 day 15 €

Under-12s must be accompanied by a parent



### **23.11.2003 OPENING OF THE CHRISTMAS STREET**

Aleksanterinkatu, Helsinki's official Christmas street, will be declared open in a ceremony culminating in the turning on of the Christmas lights. Santa Claus and his wife arrive from Lapland aboard a steam-locomotive at the Central Railway Station at 12.20pm. From there a great Christmas parade, complete with elf orchestra and reindeers, will set off at 12.40pm along the following route: Kaivokatu - Keskuskatu - Pohjoisesplanadi - Mannerheimintie - Kolmensepänaukio, where Mayor Eva-Riitta Siitonen will give her official opening speech. After this the parade continues: Aleksanterinkatu - Unioninkatu - Pohjoisesplanadi - Mannerheimintie - Kolmensepänaukio.

Aleksanterinkatu and surrounding areas.

### **25-30.11.2003 'KETTUPÄIVÄT' (FOX DAYS)**

#### **SHORT FILM FESTIVAL**

Presenting Finnish short films and documentaries.

Orion Cinema, Eerikinkatu 15

Further information: tel. +358 (0)9 6154 0201

### **26.11.2003 FRANCIS GOYA IN CONCERT**

The Belgian guitarist performed in several bands in the 1960s. In the '70s he became interested in more romantic music, which led to the mandolin and Spanish guitar.

Savoy Theatre, Kasarmikatu 46-48, 7pm

Tickets: Lippupalvelu, tel. +358 (0)600-10-800 (1.30 €/min+local call charge)

Price: 34 €

### **28-30.11.2003 HELSINKI MOTOR SHOW**

The only annual motor show in the Nordic region. The show includes an extremely broad selection of new and interesting car models.

Helsinki Fair Centre, Messuaukio 1, 28.11: 10am-7pm, 29-30.11: 10am-6pm

Tickets: from the door

Prices: adults: 12 €, children (7-15) and pensioners 6 €, under-7s free with adult

### **28-29.11.2003 KATRI HELENA: 40 YEARS IN CONCERT**

Katri Helena has been one of Finland's leading popular singers for 40 years.

Finlandia Hall, Mannerheimintie 13 e, 28.11: 7pm, 29.11: 6pm

Tickets: Lippupalvelu, tel. +358 (0)600-10-800 (1.30 €/min+local call charge)

Prices: 20-25 €

### **30.11.2003 LIGHT PARADE**

The highlight of this year's Forces of Light event includes breathtaking installations and performances. The parade begins at Suomenlinna and ends at Hietalahti Market.

### **30.11.2003 AVANTI! 20TH ANNIVERSARY CONCERT**

This special concert will feature the premiere of the latest composition by world-famous Finnish conductor Esa-Pekka Salonen, a quintet for wind instruments. Soloists include mezzo-soprano Lilli Paasikivi.

Helsinki Conservatory, Ruoholahdentori 6, 7pm

Tickets: Lippupiste, tel. +358 (0)600 900 900

(0.95 €/min+local call charge)

Prices: 30/20 €



### **29-30.11.2003 SUOMENLINNA CHRISTMAS FAIR**

A fun Christmas event for the entire family, including museums and handicrafts workshops. The opening ceremony and festivities take place on 29.11 at 12.30pm at the Main Quay. Children from the Suomenlinna Primary School perform both days at 1.45pm. The programme also includes a performance by the Walli Theatre and an adventure tour for the kids (tickets from Suomenlinna on the day 4/6 €), plus concerts, a live Jukebox and the Christmas Elf's post office.

Suomenlinna, Iso Mustasaari and Susisaari

## **2.12.2003 TASAVALLAN PRESIDENTTI AND WIGWAM IN CONCERT**

These two classic Finnish rock bands from the 1970s have both made strong comebacks to the stage in recent years.

Savoy Theatre, Kasarmikatu 46-48, 7pm

Tickets: Lippupalvelu, tel. +358 (0)600-10-800 (1.30 €/min+local call charge)

Prices: 22/18€

## **3-7.12.2003 WOMEN'S CHRISTMAS MARKET**

This traditional Christmas event is arranged this year for the 72nd time. The market features Finnish handicrafts, such as jewellery, knitted goods, ceramics, leather and wood items, and Christmas treats and decorations.

Wanha Satama, Pikku-Satamakatu 3-5, daily 10am-6pm

Tickets: from the door

Prices: adults 3 €, children 1 €/0 €

## **5.12.2003 POPFINLANDIA**

A 5-hour mega-concert featuring 20 of Finland's top pop and rock acts, including Hanoi Rocks, Gimmel, Bomfunk MC's, Crash, Paleface, J. Karjalainen, Samuli Edelman, Tuomari Nurmio, Pikku G, Melrose and Jean S.

Helsinki Ice Hall, Nordenskiöldinkatu, 7pm

Tickets: Lippupalvelu, tel. +358 (0)600-10-800 (1.30 €/min+local call charge)

Price: 25 €

## **6.12.2003 INDEPENDENCE DAY CELEBRATIONS**

Finland celebrates 86 years of independence. Students and war veterans lay a wreath at the heroes' monument at Hietaniemi Cemetery at 4pm, followed at 5pm by the traditional torchlight parade from the cemetery to the Senate Square. Mayor Eva-Riitta Siitonen will deliver her annual address from the steps of the Cathedral.

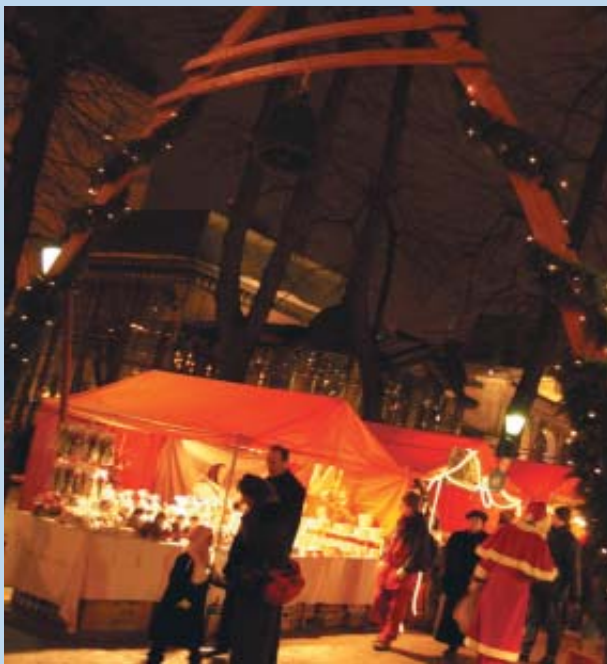
## **6-7.12.2003 WINNER 2003, INTERNATIONAL DOG SHOW & ANIMAL FAIR**

Around 7000 dogs from over 10 countries will be on show at Finland's annual dog show, including rare breeds such as the Bourbonnais, Portuguese Water

## 8-21.12.2003 ST. THOMAS CHRISTMAS MARKET

This annual Christmas event takes place along the Esplanade Park, from the Kappeli Restaurant all the way to Mikonkatu. Over 100 booths sell handicrafts, treats and baked goods to bring to the Christmas table. While shopping you can also enjoy delicious hot food and drinks at one of the many food booths. The guest of honour is none other than Santa Claus, who hands out candies to children on the opening day and weekends.

Esplanade Park, Mon-Fri 11am-6pm, Sat-Sun 10am-5pm



Dog, Cane Corso and Barbet. The animal fair in turn will feature species such as gerbils, ferrets, prairie dogs and large parrots. Cats, rabbits, guinea pigs and domestic rodents are on show both days.

Helsinki Fair Centre, Messuaukio 1, daily 9am-5pm

Tickets: from the door

Prices: adults 12 €, children (5-12) 6 €, 2-day ticket 17 €, family ticket 25 €

### **6.12.2003-6.1.2004 STABLE ELF OUTINGS**

This annual winter event at the Helsinki Zoo on Korkeasaari island is great for kids – and their parents! The stable elves take you on fairy-tale tour of the island, including a visit to the elves' workshop.

Helsinki Zoo at Korkeasaari island, daily 10am-4pm

Tickets: from the gate

Prices: adults 5 €, children (7-16) 3 €, pensioners 4 €, group (1-2 adults and 3 paying children) 16 €

### **7.12.2003 CHRISTMAS STAR CONCERT**

The concert begins with performances of light music, followed by Christmas music. Performers include Finnish favourites Aki Sirkesalo, Samuli Edelman, TikTak, Jean S., Pentti Hietanen and Maria Lund. The orchestra is the Lohja Big Band.

Finlandia Hall, Mannerheimintie 13 e, 4pm and 7pm

Tickets: Lippupalvelu, tel. +358 (0)600-10-800 (1.30 €/min+local call charge)

Prices: 25-35 €

### **9.12.2003 SWINGING CHRISTMAS**

The Antti Sarpila Swing Band and friends give a little swing to Christmas. A children's choir will also sing Christmas songs with a touch of swing.

Finlandia Hall, Mannerheimintie 13 e, 7pm

Tickets: Lippupalvelu, tel. +358 (0)600-10-800 (1.30 €/min+local call charge)

Price: 28 €

### **10.12.2003 JARI SILLANPÄÄ CHRISTMAS CONCERT**

One of Finland's favourite popular singers performs a feast of beautiful melodies.

### **12-23.12.2003 OLD STUDENT HOUSE CHRISTMAS MARKET**

This market has over 160 sellers offering handicrafts and other unique products, including candles, Christmas treats, clothes and decorations.

Vanha Ylioppilastalo, Mannerheimintie 3, Mon-Fri 11am-8pm,  
Sat-Sun 11am-6pm



### **13.12.2003 LUCIA PARADE**

The radiant Lucia arrives at the Senate Square with her other maidens, to be greeted by thousands of spectators. Together with the impressive Christmas tree that is erected in the Senate Square, the Lucia brings light to the darkness. The Lucia is crowned at the Cathedral at 5pm, and at 6pm she descends down the steps of the Cathedral with her candles alight.

Parade: Helsinki Cathedral - Finlandia Hall

### **14.12.2003 CHRISTMAS OUTING ON SEURASAARI ISLAND**

This annual event offers Christmas plays, Christmas songs, and games with the local elves. Visitors can also enjoy some traditional Christmas rice pudding, and at the Festival Grounds you can even grill sausage. Santa Claus and his wife will be there to listen to the children's Christmas wishes.

Seurasaari island, 1pm-5pm

Finlandia Hall, Mannerheimintie 13 e, 7pm

Tickets: Lippupalvelu, tel. +358 (0)600-10-800 (1.30 €/min+local call charge)

Prices: 30/25 €

### **18.12.2003 PLACIDO DOMINGO IN CONCERT**

The greatest tenor of our times visits Helsinki. The Lohja City Orchestra will be directed by Placido Domingo's faithful conductor Eugene Kohn. The evening's guest soprano, as invited by Placido himself, will be rising star Riikka Hakola.

Hartwall Arena, Areenakuja1, 8pm

Tickets: Lippupalvelu, tel. +358 (0)600-10-800 (1.30 €/min+local call charge)

Prices: 49/59/69/109/149 €

### **21.12.2003 ARGENTINEAN CHRISTMAS MASS – MISA CRIOLLA**

Ariel Ramirez is one of Argentina's most important musicians. He came to the world's attention with his Christmas Mass, Misa Criolla. In addition, the concert will feature Argentinean compositions, folk songs and Christmas songs.

Finlandia Hall, Mannerheimintie 13 e, 7pm

Tickets: Lippupalvelu, tel. +358 (0)600-10-800 (1.30 €/min+local call charge)

Prices: 40/35€

### **26.12.2003–5.1.2004 2004 IIHF ICE HOCKEY WORLD U20 CHAMPIONSHIPS**

Finland is once again the arena for world championship ice hockey, this time for Under-20s. The games will be played in Helsinki and Hämeenlinna, and ten countries will be represented: Canada, Russia, Finland, USA, Czech Republic, Slovak Republic, Switzerland, Sweden, Ukraine and Austria. The Finnish team will play all matches except the preliminaries in Helsinki.

Helsinki Ice Hall, Nordenskiöldinkatu, various times

Tickets: Lippupalvelu, tel. +358 (0)600-10-800 (1.30 €/min+local call charge)

Prices: 7-30 €



### **31.12.2003 10TH ANNIVERSARY GALA CONCERT AT THE OPERA HOUSE**

Helsinki's impressive opera house celebrates its 10th anniversary with a concert of operatic and ballet pieces conducted by Muhai Tang.

National Opera, Helsinginkatu 58, 8pm

Tickets: National Opera, tel. +358 (0)9 4030 2321 and

Lippupiste, tel. +358 (0)600 900 900 (0.95 €/min+local call charge)

Price: 62 €

### **31.12.2003 BAROQUE NEW YEAR'S CONCERT**

Concert featuring Italian baroque music from the 16th and 17th centuries.

House of Nobility, Ritarikatu 1, 6pm

Tickets: Lippupiste, tel. +358 (0)600 900 900 (0.95 €/min+local call charge)

Prices: 15 €, students 10 €

### **31.12.2003 NEW YEAR'S EVE CELEBRATIONS**

Finland rings in the New Year traditionally in front of the Cathedral, where there will be speeches and music.

Senate Square

### **3.6.1.2004 ZOO EXPO**

A great event for all animal lovers, featuring all kinds of furry creatures.

Cable Factory, Tallberginkatu 1

Further information: tel. +358 (0)9 4763 8330 (Mon-Fri 8am-6pm)

### **6.1.2004 EPIPHANY STRAUSS CONCERT**

The theme of this year's traditional Epiphany concert is Strauss's most fascinating and popular compositions, conducted by Atso Almila.

National Theatre, Läntinen Teatterikuja 1, 1pm and 6pm

Tickets: Lippupalvelu, tel. +358 (0)600-10-800 (1.30 €/min+local call charge)

Prices: 25-260 €

### **6.1.2004 EPIPHANY CONCERT**

The Helsinki Philharmonic presents a concert for the whole family, conducted by Leif Segerstam.

Finlandia Hall, Mannerheimintie 13 e, 3pm

Tickets: Lippupiste, tel. +358 (0)600 900 900 (0.95 €/min+local call charge)

Prices: 5-15 €

### **9-11.1.2004 ALTERNATIVE PARTY**

Festival of computer and techno music.

Gloria Cultural Arena, Pieni Roobertinkatu 12-14

Tickets: from the door or by e-mail to [toivotuo@fishpool.com](mailto:toivotuo@fishpool.com)

Prices: 25 € from the door, in advance 20 €

### **10-11.1.2004 LET'S GET MARRIED!**

Finland's annual wedding fair, offering information about catering, venues, wedding dresses, flowers and decorating. The highlight each year is the fashion show for wedding dresses.

Wanha Satama, Pikku Satamakatu 3-5, 10am-5pm

Tickets: from the door. Price: 12 €

### **15-18.1.2004 DOCPOINT DOCUMENTARY FILM FESTIVAL**

This festival offers the best of Finnish and international documentaries, both new and classics. The event includes seminars, lectures and workshops. The

theme this year will be Switzerland. The guest will be the Visions du Réel festival from Nyon, which will present Swiss works plus other films that have won awards at the festival.

Bio Rex, Mannerheimintie 22-24

Tickets: Bio Rex, tel. +358 (0)201 555 800

### **15-18.1.2004 MATKA – THE FINNISH INTERNATIONAL TRAVEL FAIR 2004**

This annual international travel fair presents new destinations and sights, plus landscapes, tastes, people and idea from all corners of the globe. Includes active fitness and outdoor vacations, beach holidays, cultural city breaks, fun sightseeing tours and exciting do-it-yourself adventures. This year's theme will be family travel.

Helsinki Fair Centre, Messuaukio 1, open to the public: Fri 2pm-7pm, Sat 9am-6pm, Sun 10am-6pm

Tickets: from the door, includes entrance to Caravan 2004 (see below)

Prices: adults 12 €, children (7-15) 8 €, family ticket 25 €, groups 8 €

### **16-18.1.2004 CARAVAN 2004**

An exhibition of caravans for people who appreciate travelling at their own pace.

Helsinki Fair Centre, Messuaukio 1, Fri 2pm-7pm, Sat 9am-6pm, Sun 10am-6pm

Tickets: from the door, includes entrance to Matka 2004 (see above)

Prices: adults 12 €, children (7-15) 8 €, family ticket 25 €, groups 8 €

### **20.1.2004 SHANIA TWAIN IN CONCERT**

Country pop mega-star Shania Twain has sold no less than 34 million copies of her album 'Come On Over'. Born in Canada and currently living in Switzerland, the singer also includes Latin and Eastern exotic influences in her music.

Hartwall Arena, Areenakuja 1, 8pm

Tickets: Lippupalvelu, tel. +358 (0)600-10-800

(1.30 €/min+local call charge)

Prices: 44, 46 and 49 €



## **17-18.1. & 24-25.1.2004 INTERNATIONAL ICE SCULPTURE COMPETITION**

The world's best ice sculptors arrive in Helsinki to show us what they can do. The emphasis during the first weekend is on technical skill and features a miniature sculpture competition, whereas the second weekend features large sculptures. The works of art are on display after the competition as well, weather permitting.

Helsinki Zoo at Korkeasaari island, Mon-Sun 10am-4pm

Tickets: from the gate

Prices: adults 5 €, children (7-16) 3 €, pensioners 4 €,

## **22-25.1.2004 DISNEY ON ICE – 100 YEARS OF DISNEY MAGIC**

This year's special centennial performance celebrates Walt Disney's legacy with all your favourite Disney characters and stories. The show includes the biggest line-up of stars ever, including Donald Duck and friends, Pinocchio and all of Disney's beloved princesses. The show also features highlights from classic Disney movies such as the Lion King, Mulan and Toy Story.

Hartwall Arena, Areenakuja 1, 22.1: 6pm, 23.1: 6pm, 24.1: 11am, 2.30pm and 6pm, 25.1: 11am and 2.40pm

Tickets: Lippupalvelu, tel. +358 (0)600-10-800 (1.30 €/min+local call charge)

Prices: adults 25-28 €, children (3-12) 16-20 €, floor seats: adults 36 € and children 26 €, under-3s free

## **24-26.1.2004 HELSINKI INTERNATIONAL FASHION FAIR**

Check out this spring's and summer's trends and hot new looks.

Helsinki Fair Centre, Messuaukio 1, open to the public 24.1: 10am-6pm

Tickets: from the door or in advance from Lippupalvelu, tel. +358 (0)600-10-800 (1.30 €/min+local call charge)

Prices: adults 12 €, children (7-15) and pensioners 8 €

## **28.1.2004 OZZY OSBOURNE IN CONCERT**

Heavy-metal legend Ozzy Osbourne first made a name for himself as front man for classic '70s band Black Sabbath.

Hartwall Arena, Areenakuja 1, 7pm

Tickets: Lippupalvelu, tel. +358 (0)600-10-800 (1.30 €/min+local call charge)

Price: 48/50€

## **30.1-1.2.2004 WOMAN OR ARTICHOKE FILM FESTIVAL**

A festival of films in which women are in the leading role, both in front and behind the camera.

Bio Rex, Mannerheimintie 22-24

Tickets: Bio Rex, tel. +358 (0)201 555 800

Prices: 4 €/performance, festival ticket 30 €

## **30.1-1.2.2004 MOTORCYCLE EXHIBITION 2004**

Exhibition of motorbikes and mopeds, plus spare parts and other related



#### **4-13.2.2004 HUIMA – INTERNATIONAL NEW CIRCUS FESTIVAL**

This festival presents new types of performing arts, both in terms of content and form. Includes fun, exciting, wonderful and innovative performances that transcend the traditional boundaries of theatre, circus and dance.

Cable Factory, Tallberginkatu 1

Further information: +358 (0)9 6962 8020

Tickets: Lippupalvelu tel. +358 (0)600-10-800 (1,30 €/min+local call charge)

Prices: 15-26 €, ask about the festival pass

products and services.

Helsinki Fair Centre, Messuaukio 1, 30.1: 10am-8pm, 31.1: 9am-6pm,  
1.2: 10am-6pm

Tickets: from the door

Prices: adults 12 €, children (7-15) 6 €

## **6.2.2004 KRAFTWERK IN CONCERT**

Pioneers of electro pop, Kraftwerk are famous for their robot pop sound, which has had a huge impact on popular music over the past 30 years.

Helsinki Ice Hall, Nordenskiöldinkatu, 8pm

Tickets: Lippupalvelu, tel. +358 (0)600-10-800 (1.30 €/min+local call charge)

Price: 38 €

## **6-7.2.2004 FIRE IN THE SKY**

This public event uses lights, sounds and pyrotechnics to recreate the atmosphere of the bombing of Helsinki 60 years ago. The facades of the University, Government Palace and Cathedral will be illuminated on 6.2 at 6.51pm. The lights will be on until 12midnight. The Senate Square will feature Anssi Mänttärin's documentary about the bombing, plus speeches by Lasse Pöysti and Aira Samulin, a choir performance and the Finlandia light show on 7.2 between 7pm-8pm.

Senate Square, Cathedral steps

## **7.2.2004 THE FUNK BROTHERS IN CONCERT**

This group has had more number one hits than the Beatles, the Rolling Stones, Elvis Presley and the Beach Boys put together. Starring the legendary Stevie Winwood and Isaac Hayes.

Helsinki Ice Hall, Nordenskiöldinkatu, 7pm

Tickets: Lippupalvelu, tel. +358 (0)600-10-800 (1.30 €/min+local call charge)

Price: 45 €

## **7-15.2.2004 HELSINKI INTERNATIONAL BOAT SHOW**

Messukeskus, Messuaukio 1, Mon-Fri 10am-7pm, Sat-Sun 10am-6pm

Tickets: from the door

Prices: adults 12 €, children (7-15) 8 €,

family ticket (2 adults and 2 children) 25 €

## **8.2.2004 HELMUT LOTTI: POP CLASSICS IN SYMPHONY**

Belgian Helmut Lotti has achieved great popularity throughout Europe. His concerts feature a wide selection of music from Lotti's ten-year career.

LänsiAuto Arena, Urheilupuistontie 3, 7pm

Tickets: Lippupalvelu, tel. +358 (0)600-10-800 (1.30 €/min+local call charge)

Price: 50 €

## **9-15.2.2004 FLAMENCO FESTIVAL**

This festival includes top performers from Spain as well as Finnish flamenco performances. The main concerts will be held at the Savoy Theatre on 13-14.2.

Further information: Helsinki Flamenco Association, tel. +358 (0)40 716 3134

## **13.2.2004 PARADE OF GRADUATING STUDENTS**

Helsinki's graduating high-school students celebrate their last day at school by parading through the city on the backs of trucks throwing candies to passers-by.

Esplanade, around noon

## **21-22.2.2004 FINNISH YOUTH CHAMPIONSHIPS IN CROSS-COUNTRY SKIING**

Paloheinä

Further information: Finnish Ski Association, tel. +358 (0)9 348 121

## **24.2.2004 SEURASAARI SHROVETIDE**

The traditional Seurasaari Shrovetide event was first held in 1965. The day is spent with sleigh rides, horse rides, games and other fun events for the whole family. Visitors can warm themselves up next to the bonfire and grill sausage. The kiosk at the Festival grounds is open from 11am-5pm.

Seurasaari island

## **27.2-7.3.2004 MUSICA NOVA HELSINKI**

The theme of this year's international new music festival is new and old Vienna. The festival features music and experiences for all ages. In addition to concerts, premieres and artist workshops, the festival includes unique opera dances.

Further information: tel. +358 (0)9 6126 5100

## **28.2.2004 OPERA DANCES**

This special event offers the audience the chance to get up and dance on the opera's stage. Starring guest soloists, the concert also promises Viennese waltzes to the sounds of the opera's orchestra as well as swinging dance music by the Opera Big Band. Together with the Musica nova Helsinki festival.

National Opera, Helsinginkatu 58, 8pm

Tickets: Lippupiste, tel. +358 (0)600 900 900 (0.95 €/min+local call charge) or National Opera +358 (0)9 4030 2211

Price: 48 €

## **5-7.3.2004 GOLF 2004, BIKE 2004, FITNESS 2004**

Fair for active people.

Helsinki Fair Centre, Messuaukio 1,

Fri: 2pm-7pm, Sat: 10am-6pm, Sun: 10am-5pm

Tickets: Lippupalvelu, tel. +358 (0)600-10-800

(1.30 €/min+local call charge) or from the door

Prices: adults 12 €, children (7-15) 8 €,

family ticket (2 adults and children under 16) 25 €

## **7.3.2004 MAGIC TIME**

A music adventure for the whole family and children's own opera dances. Together with the Musica Nova Helsinki festival.

National Opera, Helsinginkatu 58

Tickets: Lippupiste, tel. +358 (0)600 900 900 (0.95 €/min+local call charge) or National Opera +358 (0)9 4030 2211

## **13.3.2004 RED BULL CITY FLIGHT**

Tens of thousands of spectators will marvel at the performances of snowboarders and new school skiers.

City centre

## **13-21.3.2004 CHURCH MUSIC FESTIVAL**

Annual festival of church music held in Helsinki's churches.

Venues include the Helsinki Cathedral Tempeliaukio 'Rock' Church and St. John's Church

Further information: tel. +358 (0)9 709 21

### **20.3.2004 WINE EXPO / FISH FAIR**

Helsinki's Wine Expo is a favourite among wine tasters and friends. The Fish Fair focuses on fish production and includes the Young Fish Cook of the Year competition and Finnish Oyster Cracking competition.

Helsinki Fair Centre, Messuaukio 1, Wine Expo 11am-5pm (age limit: 18), Fish Fair 10am-5pm

Price: 10 €

### **1-4.4.2004 COTTAGE, HOME AND YARD 2004**

The annual cottage fair offers information about everything you need to buy, build or renovate a summer cottage. At the same time you can check out the home building and renovation fair and the yard fair.

Helsinki Fair Centre, Messuaukio 1, Thu-Fri 10am-6pm, Sat 9am-6pm, Sun 10am-5pm. Tickets: Lippupalvelu, tel. +358 (0)600-10-800

(1.30 €/min+local call charge) or from the door

Prices: adults 12 €, children (7-15) 8 €, family ticket

(2 adults and children under 15 ) 25 €

### **2-3.4.2004 HELSINKI BEER FESTIVAL**

Hundreds of beers and dozens of ciders are on offer along with great live music.



Cable Factory, Tallberginkatu 1

Further information: tel. +358 (0)9 4763 8330 (Mon-Fri 8am-6pm)

### **3.4.2004 BALANCHINE GALA**

Ballet gala at the Opera House

National Opera, Helsinginkatu 58, 7pm

Tickets: Lippupiste, tel. +358 (0)600 900 900

(0.95 €/min+local call charge) or

National Opera +358 (0)9 4030 2211

Prices: 14-62 €

### **3-4.4.2004 SWING 2004 GOLF FAIR**

Special golf event brings together everyone interested in the sport – from beginners to scratch players. Includes exhibition with wide assortment of golf products, test areas for hitting balls and other events.

Wanha Satama, Pikku-Satamakatu 3-5,

Sat-Sun 10am-5pm

### **5.4.2004 THOMAS HAMPSON, LIED CONCERT**

American Thomas Hampson is one of the most respected baritones in the world. He is known as a multitalented singer whose repertoire includes everything from Verdi and Puccini to Monteverdi and modern composers.

National Opera, Helsinginkatu 58

Tickets: Lippupiste, tel. +358 (0)600 900 900 (0.95 €/min+local call charge) or

National Opera +358 (0)9 4030 2211

Prices: 40/30/20 €

### **9-12.4.2004 AMERICAN CAR SHOW & TUNING CAR SHOW**

A must for all fans of American metal and big motorbikes.

Helsinki Fair Centre, Messuaukio 1,

Fri: 12noon-6pm, Sat-Sun 10am-6pm

Tickets: from the door

Prices: 14 €, under-12s free accompanied by parents

### **10.4.2004 EASTER AT SEURASAARI ISLAND**

On Easter Saturday, children dress up as trolls and gather at the Festival

Grounds on Seurasaari island. During the day a small bonfire is lit, followed by the main Easter bonfire in the evening. The children perform songs and recite poems around the fire.

Seurasaari island

#### **10.4.2004 VIA CRUCIS**

The Easter dramatisation is a major event these days in Helsinki. The parade starts at Kaisaniemi Park and ends at the Senate Square.

Senate Square 9pm

#### **17.4.2004 FINNISH CHAMPIONSHIPS IN KARATE**

Pasila Sports Hall

Further information: tel. +358 (0)9 4547 435

#### **19.-24.4.2004, SOUND AND PASSION MUSIC FESTIVAL**

Gloria Cultural Arena, Pieni Roobertinkatu 12

Further information: tel. +358 (0)9 310 45812

#### **21-25.4.2004 APRIL JAZZ**

April Jazz is the largest annual jazz happening in Helsinki. International stars gather to jam at the Espoo Cultural Centre and outside tent, offering a diverse programme of jazz music.

Tapiola, Espoo Cultural Centre, Tapiola Garden, Hesari Tent

Tickets: Lippupiste, tel. +358 (0)600 900 900

(0.95 €/min+local call charge)

#### **23-25.4.2004 CHILD 2004**

Exhibition for young families, people working with children and children themselves.

Helsinki Fair Centre, Messuaukio 1,

Fri: 9am-5pm, Sat-Sun 10am-5pm

Tickets: adults 11 €, children (7-15) 5 €,

family ticket (2 adults and children 7-15) 25 €

#### **30.4-1.5.2004 STUDENT MAY DAY CELEBRATIONS**

At 6pm on 30.4, the eve of May Day, the Havis Amanda statue gets her

traditional bubble bath by students, after which they place a graduate's hat on her head while spectators cheer them on. On the morning of May Day everyone meets for a herring picnic at Kaivopuisto park.

Market Square and Kaivopuisto park



**REMEMBER ALSO:**

- National Opera, [www.operafin.fi](http://www.operafin.fi)
- theatres, [www.teatteriitto.fi](http://www.teatteriitto.fi) or [www.teatteri.org](http://www.teatteri.org)
- church Christmas concerts, [www.helsinginseurakunnat.net](http://www.helsinginseurakunnat.net)
- Finnish Ice Hockey League, [www.hartwall-areena.com](http://www.hartwall-areena.com) and [www.helsinginjaahalli.fi](http://www.helsinginjaahalli.fi)

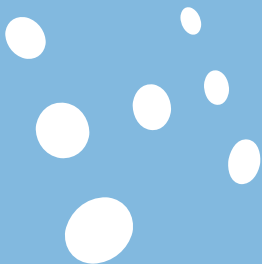
More tips are available from Tourist Information.

**TICKETS:**

Lippupalvelu, tel. +358 (0)600-10-800 (1.30 €/min+local call charge)

Lippupiste, tel. +358 (0)600 900 900 (0.95 €/min+local call charge)

Tiketti, [www.tiketti.fi](http://www.tiketti.fi), tel. +358 (0)600 1 1616 (0.66 €/min+local call charge)



# Exhibitions

Helsinki has 70 museums, offering both standing and visiting exhibitions. As in most countries, the majority of museums are closed on Mondays. A list of museums that are open on Mondays is available from Tourist Information. The price of admission varies for adults between 3 and 7 euros. Under-18s can get into some exhibitions free of charge, and elsewhere the price for children is approximately half the price for adults. Both the Ateneum Art Museum and Museum of Contemporary Art, Kiasma offer free admission: Ateneum on Wednesdays from 5pm-8pm and Kiasma on Fridays 5pm-8pm.

## **until 7.12.2003 MASTERS OF MARITIME ART**

The Helsinki City Museum's Renaissance inspired Hakasalmi Villa offers unique surroundings for the exhibition of the Masters of Maritime Art – 400 Years of Maritime Painting. The majority of the works on display come from the private collection of Professor Peter Tamm from Germany. This is the first time that such a broad selection of maritime art is exhibited in Finland. In addition to maritime paintings, the exhibition features miniature ship models made of silver, amber and bone.

Open: daily 11am-6pm

Hakasalmi Villa, Karamzininkatu 2

## **until 7.12.2003 TAPIOLA 50 YEARS**

The Museum of Finnish Architecture celebrates 50 years of the Tapiola suburb with an exhibition of original drawings, models and photographs of the area and its unique architecture. Short films and a selection of captions from postcards, magazines and newspapers of the era add to the authenticity of the period when Tapiola was designed.

Museum of Finnish Architecture, Kasarmikatu 24

Open: Tue-Sun 10am-4pm, Wed 10am-8pm

### **until 7.12.2003, PAUL ENVALDS**

An exhibition of large pots, platters, vases and sculptures using rough clay as a material by designer Paul Envalds.

Hackman Arabia Factory and Museum, Hämeentie 135

Open: Mon 12noon-7pm, Tue-Fri 12noon-6pm, Sat-Sun 10am-4pm

### **until 14.12.2003, GAME ON – THE HISTORY, CULTURE AND FUTURE OF VIDEO GAMES**

Travel in time from 1962 to the present in the world of video games. This exhibition presents the development of technology and design in video games, from the time when computers took up entire rooms to the latest game consoles. The museum also offers an enormous games room in which you can try out 120 old and new games, from Space Wars to Pong and Super Mario to Max Payne.



Helsinki City Art Museum, Tennis Palace, Salomonkatu 15

Open: Tue-Sun 11am-8.30pm

### **until 21.12.2003, MARJAANA KELLA**

Marjaana Kella has made a name for herself as a new type of portrait photographer, in which the viewer does not make contact with the model's eyes.

Finnish Museum of Photography, Cable Factory, Tallberginkatu 1 G

Open: Tue-Sun 12noon-7pm

### **until 31.12.2003, CONTINUATION WAR – FINLAND AT WAR 1941-1945**

This exhibition sheds light on the reasons, course and long-term consequences of Finland's war against the Soviet Union that began in June 1941.

War Museum, Maurinkatu 1. Open: Tue-Thu 11am-6pm, Fri-Sun 11am-4pm

### **until 31.12.2003, 50 YEARS OF HELICOPTERS IN FINLAND**

This special exhibition features Finland's oldest helicopter, plus displays of pictures and texts describing the history of the helicopter, all the way from Leonardo da Vinci's first sketches in 1483 to today.

Finnish Aviation Museum, Tietotie 3, Vantaa

Open: ma-ke 11-18, to 11-20, pe-su 11-18



**until 31.12.2003, BEAUTY NEVER FADES**

An exhibition of the museum's collections, featuring especially foreign paintings donated by Ester and Jalo Sihtola.

Sinebrychoff Art Museum, Bulevardi 40

Open: Tue, Fri 10am-6pm, Wed-Thu 10am-8pm, Sat-Sun 11am-5pm

**until 31.12.2003, TAIKO'S 20TH ANNIVERSARY  
JUBILEE EXHIBITION**

Special exhibition by the Finnish Association of Designers/Makers, featuring the works of 40 artists, including art objects, jewellery and textiles.

Finnish National Museum, Mannerheimintie 34

Open: Tue-Wed 11am-8pm, Thu-Sun 11am-6pm

**until 31.12.2003, HOUSES, SPACES**

A visually rich exhibition of the many faces of Finnish buildings emphasising the significance of local building culture. The themes include streets and

markets, village streets, yards, city architecture, the protection of industrial buildings, wooden buildings, and local names. The museum also presents its main exhibition "Helsinki Horizons" telling the history of the city.

Helsinki City Museum, Sofiankatu 4

Open: Mon-Fri 9am-5pm, Sat-Sun 11am-5pm

**until 11.1.2004, ANIMALS IN DESIGN –  
ANIMAL MOTIVES IN DESIGN**

Animals have always inspired designers and craftsmen. This exhibition presents a selection of animal motives from different cultures and materials.

Design Museum, Korkeavuorenkatu 23

Open: Tue 11am-8pm, Wed-Sun 11am-6pm



**until 9.5.2004, TARVASPÄÄ – A CASTLE FOR CHILDREN**

This exhibition of the art of Akseli Gallen-Kallela is particularly aimed at

children and families. The journey into the work, ideas and memories of the artist takes place in an allusive forest setting: from a dark and even mystical forest of the mind towards a clear and vibrant experience of nature. The exhibition on display at the fascinating original home of the artist.

Gallen-Kallela Museum, Gallen-Kallelan tie 27, Espoo

Open: Tue-Sat 10am-4pm, Sun 10am-5pm

### until 6.1.2004: FLYING!

This exhibition brings to life the science and technology behind flying – the forces that control and suspend heavier than air flying machines.

Heureka, The Finnish Science Centre, Tikkurila, Vantaa

Open: Mon-Wed 10am-5pm, Thu 10am-8pm, Fri 10am-5pm, Sat-Sun 10am-6pm

### until 11.1.2004 VILLE VALLGREN

The sculptor, merrymaker and gourmet Ville Vallgren is the star of the Ateneum Art Museum's autumn season. Everyone in Helsinki knows the Havis Amanda fountain at the Market Square, but few people know that Ville Vallgren was also a master of symbolist miniature sculptures. For these he was also awarded the prestigious grand prix at the Paris World Fair in 1900.



The work of Ville Vallgren induces both happiness and sadness. The bitter sweetness of life, the joy of its transitory pleasures, is gracefully molded in clay or terracotta, cast in bronze, or carved in marble.

Ateneum Art Museum, Kaivokatu 2

Open: Tue, Fri 9am-6pm, Wed-Thu 9am-8pm, Sat-Sun 11am-5pm

### **until 11.1.2004 IN A HURRY! DEADLINE**

DEADLINE – 125 Years of Finnish Book Illustrations presents an unprecedented amount of material relating to the history of book illustration in Finland. The exhibition is held in conjunction with the 125th anniversary of WSOY publishers and it focuses on this often forgotten art form by presenting both illustrations and their artists.

Design Museum, Korkeavuorenkatu 23

Open: Tue 11am-8pm, Wed-Sun 11am-6pm

### **until 17.1.2004 ST. BRIDGET AND FINLAND**

Displayed are the National Library of Finland's artefacts and literature related to St. Bridget.

The protector of the exhibition is Tarja Halonen, President of the Republic of Finland. National Library of Finland, Unioninkatu 36

Open: Mon-Fri 9am-6pm, Sat 9am-4pm

### **until 31.1.2004 BOOKS FROM KEKKONEN'S SHELVES – THE LIBRARY OF URHO AND SYLVI KEKKONEN**

This exhibition presents gems from the library of the former Finnish president, including medical books, war history and politics.

Urho Kekkonen Museum, Seurasaarentie 15

Open: Wed 11am-7pm, Thu-Sun 11am-5pm

### **until 31.1.2004 MASTERS OF MODERNISM**

This exhibition focuses on the 1950s and '60s and features top international artists, such as Jean Arp, Alexander Calder, Marc Chagall, Fernand Léger, Henri Matisse, Joan Miro, Georges Roualt, Pablo Picasso, Mark Rothko and Andy Warhol.

Didrichsen Museum, Kuusisaari, Kuusilahdenkuja 1

Open: Tue-Sun 11am-6pm

### **until 1.2.2004 MADE IN FINLAND**

Special exhibition of the design and production of Finnish vehicles, including cars, mopeds and motorbikes.

Technical Museum, Viikintie 1

Open: Tue-Sun 11am-5pm



**until 8.2.2004 PROCESS –  
ENCOUNTERS IN LIVE SITUATIONS**

This unique installation presents art based on processes and interaction.

Museum of Contemporary Art Kiasma, Mannerheimin-  
aukio 2. Open: Tue 9am-5pm, Sat-Sun 10am-8.30pm



**until 15.2.2004 IDO BAR-EL**

Israeli artist Ido Bar-El (born 1959) came to the public's attention in the early 1990s. Inspired by the young generation, his work has a real rock feel to it and includes all kinds of contemporary images, including public warning signs

and military helmets.

Helsinki City Art Museum, Meilahti, Tamminiementie 6

Open: Wed-Sun 11am-6.30pm

### until 15.2.2004 HAT'S

Exhibition of almost one hundred hats and other headgear from around the world.

Missionary Museum, Tähtitorninkatu 18

Open: Sat-Sun 12noon-4pm

### until 29.2.2004 NIGHT TRAIN – SURREALISTIC WAYS INTO KIASMA'S COLLECTIONS



Four different ways for visitors to experience Kiasma's art collections. The themes – Andalucian Dog, Summer Night, Midday Ghost and Crazy Love – refer to the historical background of each perspective, surrealism.

Museum of Contemporary Art Kiasma, Mannerheiminaukio 2

Open: Tue 9am-5pm, Sat-Sun 10am-8.30pm

### **until 7.3.2004 OPEN QUESTIONS**

The Finnish Science Centre presents fascinating questions, some that have been solved and others that are still open.

Heureka, Finnish Science Centre, Tiedepuisto 1, Tikkurila

Open: Mon-Wed 10am-5pm, Thu 10am-8pm, Fri 10am-5pm, Sat-Sun 10am-6pm



### **until 14.3.2004 LEA IGNATIUS**

This exhibition presents the work of graphic artist Lea Ignatius (1913-1990) from the early 1970s to the late 1980s.

Ateneum Art Museum, Kaivokatu 2

Open: Tue, Fri 9am-6pm, Wed-Thu 9am-8pm, Sat-Sun 11am-5pm

### **17.11.2003-1.2.2004 DOPING AND ANTI-DOPING**

An exhibition of the history of Finnish doping and anti-doping work.

Sports Museum of Finland, Olympic Stadium

Open: Mon-Fri 11am-5pm, Sat-Sun 12noon-4pm

## **21.11.2003-11.1.2004 JUHANI LINNOVAARA**

Juhani Linnovaara is internationally one of the best-known current Finnish artists.

Amos Anderson Art Museum, Yrjönkatu 27

Open: Mon-Fri 10am-6pm, Sat-Sun 11am-5pm

## **28.11-7.12.2003 BIENNIAL OF YOUNG ARTISTS**

Young artists will invade the Kunsthalle with an exhibition, club nights, performances, video screenings and music.

Kunsthalle Helsinki, Nervanderinkatu 3

Open: Tue, Thu-Fri 11am-6pm, Wed 11am-8pm, Sat-Sun 12noon-5pm

## **1.12.2003-5.1.2004 PRESIDENTS ON STAMPS**

An exhibition of Finnish stamps bearing the images of the republic's presidents. Pride of place is given to artist Kuuti Lavonen's portrait of President Tarja Halonen, whose 60th birthday is celebrated on a special stamp issued on 1 December.

Post Museum, Helsinki Main Post Office, Asema-aukio 5 H

Open: Mon-Fri 10am-7pm, Sat-Sun 11am-4pm

## **5.12.2003-8.2.2004 IN ANOTHER LIGHT**

Explore the world of light in this exhibition of stars, the moon and the Northern Lights, including a fantastic Aurora Borealis installation. Illuminated buildings are also pictured, along with highlights from the Forces of Light city event throughout the years.

Helsinki Information, Jugend Hall, Pohjoisesplanadi 19

Open: Mon-Fri 9am-5pm, Sun 11am-5pm

Free admission

## **1.1-8.2.2004 BÄCKSBACK COLLECTION**

The Leonard and Katarina Bäcksback art collection was donated to Helsinki City by the couple's heirs in 1976. The Meilahti Art Museum was opened especially to house the collection, which includes many gems of Finnish art

from the 20th century, as well as the work of French artists in the 1930s and '40s.

Helsinki City Art Museum, Tennis Palace, Salomonkatu 15  
Open: Tue-Sun 11am-8.30pm

### **22.1-12.9.2004 HAIR**

A unique and fascinating exhibition devoted entirely to hair.

Heureka, Finnish Science Centre, Tiedepuisto 1, Tikkurila  
Open: Mon-Wed 10am-5pm, Thu 10am-8pm,  
Fri 10am-5pm, Sat-Sun 10am-6pm

### **31.1-2.5.2004 FASTER THAN HISTORY**

The exhibition includes works by 20 to 25 artists from Estonia, Finland, Latvia, Lithuania, Latvia, and Russia. This geographically definable area contains different cultures, histories and survival strategies which only now can unfold in all their diversity.

Museum of Contemporary Art Kiasma,  
Mannerheiminaukio 2  
Open: Tue 9am-5pm, Sat-Sun 10am-8.30pm

### **4.2-31.8.2004 J. L. RунеBERG – 200 YEARS**

200th anniversary exhibition of Finnish poet J.L. Runeberg.

National Library of Finland, Unioninkatu 36  
Open: Mon-Fri 9am-6pm, Sat 9am-4pm

### **18.2-2.5.2004 BETTINA RHEIMS**

Bettina Rheims (born 1952) is a well-known photographer of women. Her subjects include international stars such as Naomi Campbell and Glenn Close. This exhibition features the artist's main work from the early 1980s to her latest series 'Shanghai' from 2003.

Helsinki City Art Museum,  
Tennis Palace, Salomonkatu 15  
Open: Tue-Sun 11am-8.30pm

### **18.2-2.5.2004 MEASURE OF A MAN**

An exhibition of contemporary Finnish art – by both men and women – that can be viewed from a new male perspective.

Helsinki City Art Museum,  
Tennis Palace, Salomonkatu 15  
Open: Tue-Sun 11am-8.30pm

### **25.2-23.5.2004 AFTER IMAGE**

An exhibition by four female photographers: Cindy Sherman, Francesca Woodman, Simryn Gill and Ana Mendieta. These artists ponder the way in which women view themselves. The exhibition raises questions about one's cultural, political, social and personal identity.

Helsinki City Art Museum,  
Meilahti, Tamminiementie 6  
Open: Wed-Sun 11am-6.30pm

### **5.3-18.7.2004 FRENCH MASTERS**

A major exhibition of over 30 artists, including the masters of realism, impressionism and symbolism, such as Jules Breton, Carolus-Duran, Eugène Carrière, Gustave Courbet, Jean-Francois Millet, Claude Monet and Odilon Redon.

Ateneum Art Museum, Kaivokatu 2  
Open: Tue, Fri 9am-6pm, Wed-Thu 9am-8pm,  
Sat-Sun 11am-5pm

### **9.3.2004-28.3.2005 CALL OF THE MINARET**

A broad exhibition about Islam, including the Muslim religion, Islamic art and science, and Muslim culture around the world.

Museum of Cultures,  
Eteläinen Rautatiekatu 2  
Open: Tue-Fri 11am-8pm, Sat-Sun 11am-6pm

### **11.3-30.5.2004 FROM MAGIC TO MEDICINE**

An exhibition of the development of European medicine from the 16th to the 19th centuries, featuring paintings, illustrations, rare books and artefacts.

Sinebrychoff Art Museum, Bulevardi 40

Open: Tue, Fri 10am-6pm, Wed-Thu 10am-8pm, Sat-Sun 11am-5pm



### **DON'T FORGET TO VISIT HELSINKI'S NEWEST MUSEUMS:**

- Bank of Finland Museum, Snellmaninkatu 2: The history of money in Finland and abroad.
- Helsinki University Museum Arppeanum, Snellmaninkatu 3: Exhibition of documents and artefacts from Helsinki University's almost 360-year history.

### **CHRISTMAS FEELING**

- 30.11.2003-5.1.2004 Traditional Christmas decorations in the City Museum's Burgher's House and the Tuomarinkylä Museum.

